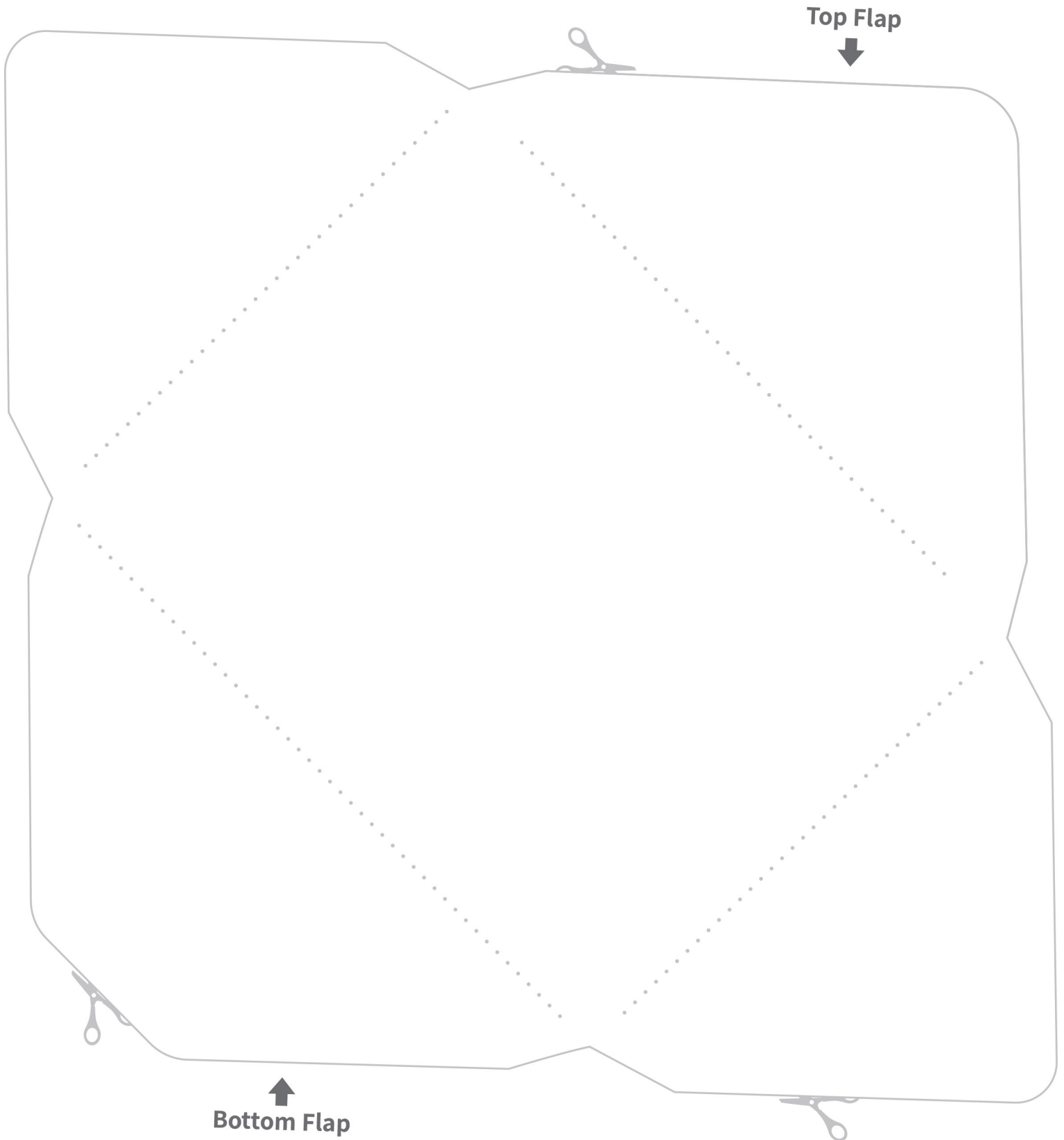


INSTRUCTIONS:

- Cut out the envelope along the solid lines.
- Place the envelope with the dotted lines facing up.
- Fold the sides along the dotted lines.
- Fold the bottom flap over the sides.
- Glue the bottom flap on top of the sides. (apply glue only to the overlapping areas).
- Fold the top flap.

Printable envelope

Envelope size:
5.75" X 4.375" / 14.6 X 11.11 CM



INSTRUCTIONS:

- Print the liner template on the back side of a patterned paper.
- Cut the paper along the solid lines.
- Glue the liner on top of the envelope template.
- Fold the envelope according to the instructions on the envelope template sheet.

Printable envelope liner

For envelope sized
5.75" X 4.375" / 14.6 X 11.11 CM

